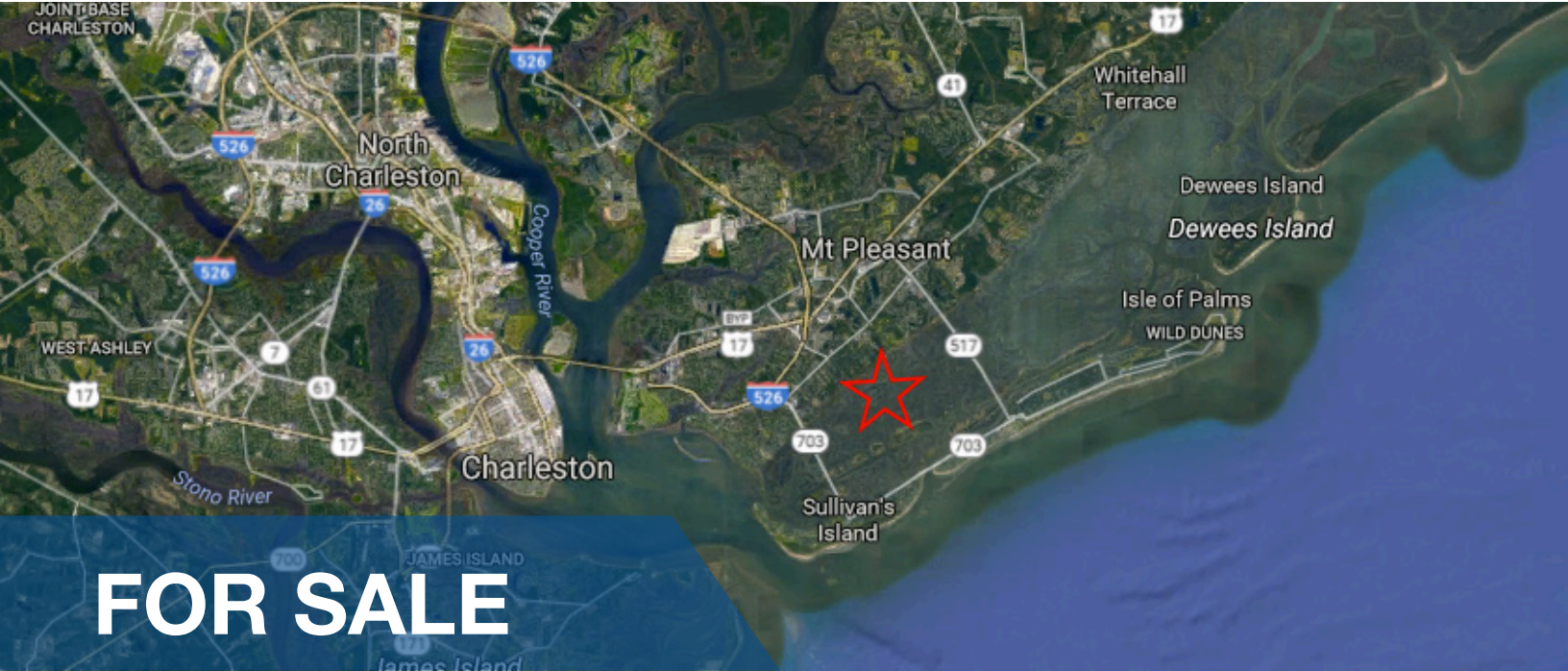


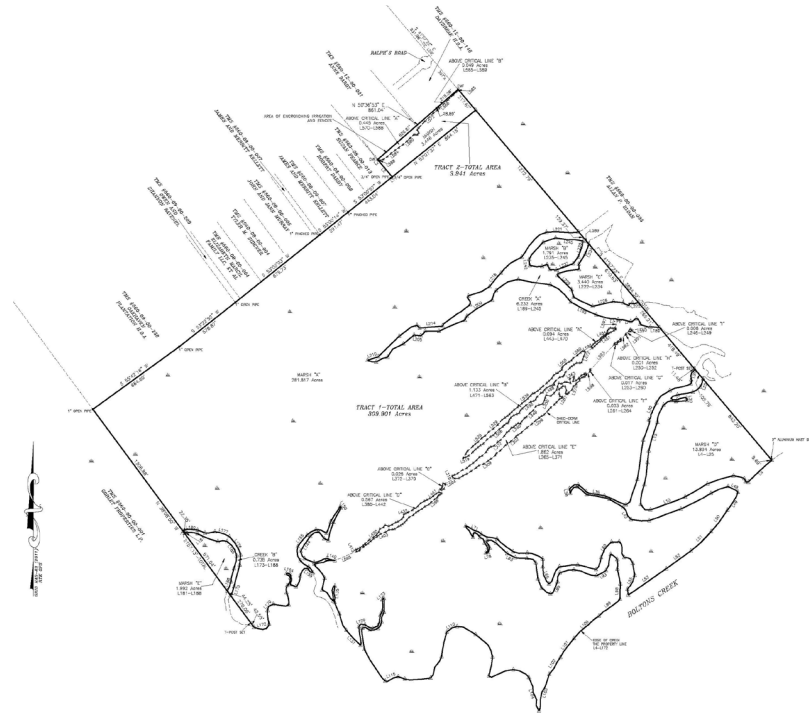
Mount Pleasant Islands

Rifle Range Rd, Mount Pleasant, SC 29464



FOR SALE

- Tax Map Numbers:
5600000004 AND 5600000040
- 3.70 AC Highland and 310.14 AC Marsh
- 313.84 Acres located between the Isle of Palms Connector and Ben Sawyer Blvd
- Multiple approved dock locations ranging from 130' -1,000' with a 10'-14' floater
- Easily accessible by boat
- Perfect for recreational use
- SALES PRICE: \$299,000



DEMOGRAPHICS

	1 Mile	3 Mile	5 Mile
Total Population:	8,972	48,773	70,134
Total Households:	4,309	21,828	30,326
Median HH Income:	\$72,769	\$79,318	\$85,486

Sam DeWees | Office: 803-766-0900 | Cell: 803-528-5155 | sam@deweereg.com | www.deweereg.com

This information has been obtained from sources we believe to be reliable; however, no investigation regarding these matters has been conducted and we make no warranty or representation whatsoever regarding the accuracy or completeness of the information provided.

Mount Pleasant Islands

Rifle Range Rd, Mount Pleasant, SC 29464



- Parcel Outlines
- Island “3.70 AC Walkable Highland”
- Approved Possible Dock Locations

Sam DeWees | Office: 803-766-0900 | Cell: 803-528-5155 | sam@deweereg.com | www.deweereg.com

This information has been obtained from sources we believe to be reliable; however, no investigation regarding these matters has been conducted and we make no warranty or representation whatsoever regarding the accuracy or completeness of the information provided.